

All Lodging Units

All camps have a fully equipped kitchen with dishes, cooking utensils, coffee maker, toaster, microwave oven, range, and refrigerator. Living rooms have a couch, alarm clock, TV with DirecTV, A/C and heat, and wi-fi. Outside is a gas grill, fire ring, and a picnic table. Bedding and towels are included with all cabins but not with trailers (allows us to keep the trailer prices low).

One boat dock, use of launch ramp and fish cleaning station is included. Extra docks are available at \$20.00 per night.

A 50% deposit within 2 weeks is required to hold your reservation. The balance is due upon your arrival. All prices stated are cash prices. Please see the website for payment by credit card. An 8 week notice of cancellation is required for full refund of deposit. No refunds for early departure.

Pets are not allowed.



Gray Cabins (JC1 & JC2)

JC1: 1-5 people: \$200 per night

JC2: 1-5 people: \$215 per night

June thru July: JC1 \$190, JC2 \$200 per night

Extra people: add'l \$35 per night each

All prices plus tax

Gray cabins can accommodate up to 10 people with 2 bedrooms downstairs, one with a queen bed, one with 2 single beds, and 7 single beds upstairs. Cabins include bedding and towels. One boat dock and use of fish cleaning station is included. JC2 has been recently modeled with an all new kitchen with dishwasher.



2 Bedroom Log Cabin (LC3)

1-4 People: \$180 / night

June thru July: \$170 / night

Extra people: add'l \$35 per night each

All prices plus tax



Log cabin can accommodate up to 10 people. Full kitchen with dishwasher. One bedroom has a set of bunk beds and a single bed. Second bedroom has 1 set of bunk beds. The loft has 4 single beds. The living room has a couch and TV. Includes bedding and towels. One boat dock and use of fish cleaning station is included.



3 Bedroom Log Home (LC4)

1-6 People: \$270 / night

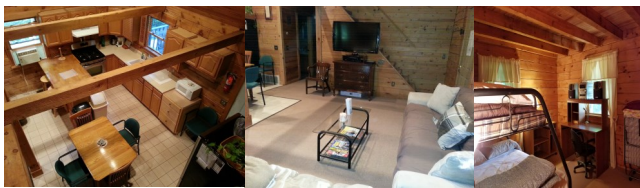
Extra people: add'l \$40 per night each

Minimum 2 night stay. Sleeps up to 10.

Includes bedding, towels & dock.

Newly remodeled kitchen with dishwasher.

All prices plus tax



1 Bedroom Log Cabins (LC1 & LC2)

1-4 People: \$160 / night

June thru July: \$150 / night

Extra people: add'l \$35 per night each

All prices plus tax



Log cabins can accommodate up to 5 people. The bedroom has 2 sets of bunk beds. Full kitchen and living room with futon and TV. Includes the bedding and towels. One boat dock and use of fish cleaning station is included.



Cabin (LC5)

1-4 people: \$205 per night

Available: mid September to mid November

Extra people: add'l \$35 per night each

Sleeps 10. Includes bedding and towels

All prices plus tax

Cabin has 1 bedroom downstairs (queen bed). Upstairs has 5 single beds and 2 cots. Full kitchen with dishwasher, dining room, bathroom and huge deck out back. Includes bedding and towels.



Charters

Charter with us aboard our 30 foot SportCraft fully equipped with all the tackle and electronics needed for an exciting fishing adventure!



Salmon or Trout Fishing

	1-4 persons	Add'l People
6 hours of fishing	\$650.00	\$150.00
8 hours of fishing	\$800.00	\$180.00
3 hour afternoon delight	\$475.00	\$120.00

Accommodations for charter customers are available at 15% off normal rates at Catfish Creek Camp.

A 50% deposit will hold your day of adventure and enjoyment.

Please reserve early for the best dates!

Your captain reserves the right to cancel the charter due to weather conditions. The charter may be rescheduled or the deposit refunded if canceled by Captain. An 8 week notice of cancellation is required for refund of deposit.

Cash price is listed. Please see website for credit card price.



May 2022



50' House Trailers (T1 - T7)

1-4 people: \$115 per night
 June thru July: \$110 per night
 Extra people: add'l \$30 per night each
 6 nights or more 5% off total bill
 All prices plus tax

Trailers can accommodate 4 to 6 people. We have two 3-bedroom and three 2-bedroom trailers available. All have a double bed in the master bedroom and a set of bunk beds in the smaller bedrooms. You must bring your own bedding and towels. One boat dock and use of fish cleaning station is included.



Creek-Front Cabin (RC2)

1-4 people: \$225 per night
 Extra people: add'l \$35 per night per person
 Sleeps 6. Includes bedding, towels and 1 dock
 All prices plus tax

Cabin has a full kitchen, bathroom and bedroom with 2 single beds downstairs, an open upstairs with 4 single beds and a half bathroom. There is a lower and upper deck in front of cabin. The included boat dock is only 30 feet from the cabin.



Docking facilities, use of the fish cleaning stations, freezer space, and boat ramp are included with our camp rentals. Dry docking is available for repeat customers. Fishing licenses, ice, marine gas and souvenir hats and T-shirts are available at our office.



Catfish Creek Fishing Camp provides easy access to Lake Ontario where some of the best brown trout, salmon, and steelhead fishing can be found. We are located less than 12 miles from the Oswego and Salmon Rivers.

Catfish Creek Fishing Camp also offers the opportunity to fish for species such as lake trout, perch, and small mouth bass.

We have lake access for jet skis, kayaks, and many other water sports including scuba diving on area ship wrecks. Nearby activities include golf, Oswego's famous Harborfest, a super-modified race track in Oswego, museums, a historic fort, and antique shopping.

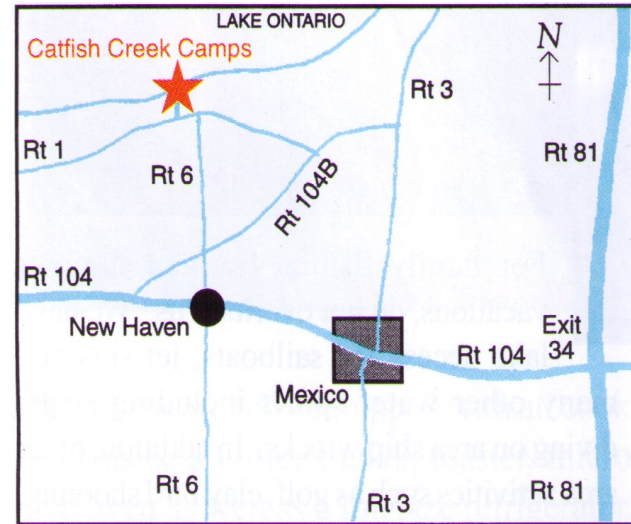
Directions

Interstate 81 to Exit 34. Take Rt. 104 West ten miles through the town of Mexico to the center of New Haven. Make a right turn at the Post Office onto Rt. 6. Go to the second stop sign on Rt. 6. Turn left onto Rt. 1 and go two-tenths of a mile. Turn right onto Chase Drive. Follow dirt road to the camp sign. Catfish Creek Fishing Camp office is the blue house on the right.

GPS Address

118 Chase Drive, Oswego, NY 13126

printed January 2023



For information or reservations
 Call Wally or Cheryl at
(315) 963-7310
Catfish Creek Fishing Camp
 118 Chase Dr
 PO Box 218
 New Haven, NY 13121
 E-mail: catchfish@catfishcreek.com
 Visit our website at: www.catfishcreek.com



**Nightly or Weekly
 Log Cabins - House Trailers
 includes Boat Launch & Docking**

Show special: \$1560
2-6hr Charters plus 2 Nights Lodging in LC1 or LC2
Must reserve by 4/30/2023.

Located in the heart of trout and salmon country, between the famous Salmon and Oswego Rivers in New Haven, NY. Lake Ontario is only 300 yards from our protected docks.

The camp is open from early April through late November, weather permitting.

One bedroom log cabins and house trailers can accommodate up to 6 people. The 6 larger cabins can accommodate up to 10 people. All the units include a fully equipped kitchen, bath, TV with DirecTV, A/C, heat, wi-fi and an overnight dock.

Please feel free to call us for more information.

Please reserve early for the best dates.

